

PLEASE CHECK WWW.MOLEX.COM FOR LATEST PART INFORMATION

Part Number: **0015475104**
Status: **Active**
Overview: cgrid_sl_products
Description: 2.54mm (.100") Pitch SL™ FFC/FPC Connector - Single Row Male Version D, 10 Circuits

Documents:

[3D Model](#) [Product Specification PS-70430 \(PDF\)](#)
[Drawing \(PDF\)](#) [RoHS Certificate of Compliance \(PDF\)](#)

Agency Certification

CSA LR19980
 UL E29179

General

Product Family FFC/FPC Connectors
 Series [70431](#)
 Comments Male
 Overview cgrid_sl_products
 Product Name SL™

Physical

Circuits (Loaded) 10
 Contact Position N/A
 Durability (mating cycles max) 50
 Entry Angle Vertical
 Flammability 94V-0
 Number of Rows 1
 Orientation Vertical
 PCB Locator No
 PCB Retention None
 Packaging Type Tube
 Pitch - Mating Interface (in) 0.100 In
 Pitch - Mating Interface (mm) 2.54 mm
 Polarized to PCB No
 Stackable Yes
 Surface Mount Compatible (SMC) N/A
 Temperature Range - Operating -40°C to +105°C
 Termination Interface: Style IDT or Pierce
 Wire/Cable Type FFC/FPC

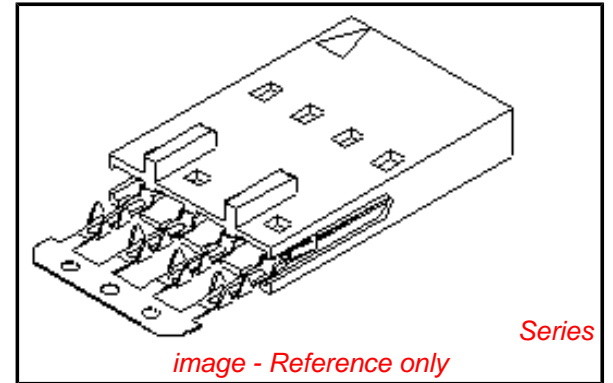
Electrical

Current - Maximum per Contact 2A
 Voltage - Maximum 250V

Material Info

Reference - Drawing Numbers

Product Specification PS-70430
 Sales Drawing SDA-70431-****



EU RoHS **China RoHS**

Compliance Status

Not Reviewed

REACH SVHC

Not Reviewed

Halogen-Free

Status

Not Reviewed

Need more information on product environmental compliance?

Email productcompliance@molex.com
 For a multiple part number RoHS Certificate of Compliance, [click here](#)

Please visit the [Contact Us](#) section for any non-product compliance questions.

Search Parts in this Series

[70431Series](#)

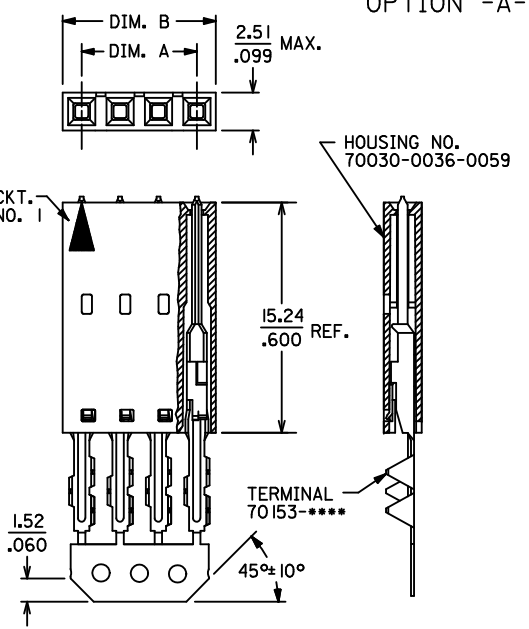
Application Tooling | FAQ

Tooling specifications and manuals are found by selecting the products below. Crimp Height Specifications are then contained in the Application Tooling Specification document.

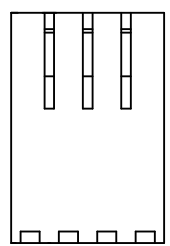
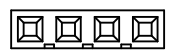
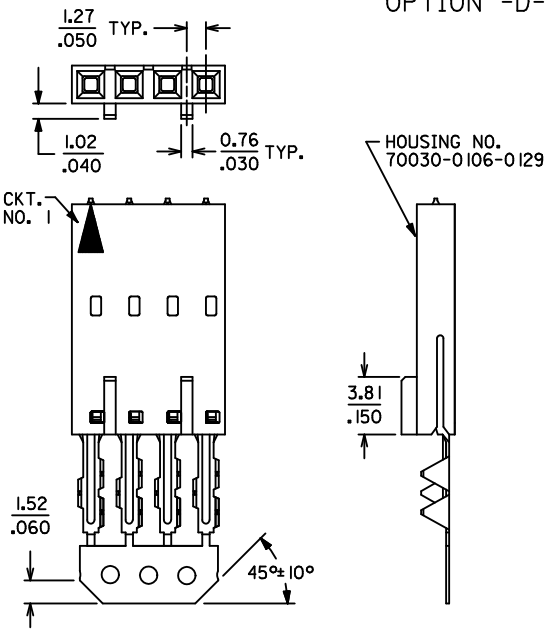
Global

Description	Product #
Tool Kit for Standard	0622007400
Manual Press FFC	
Standard Manual	0622007800
Press for FFC	

OPTION -A-



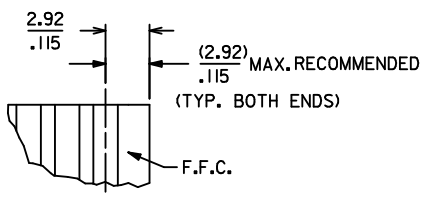
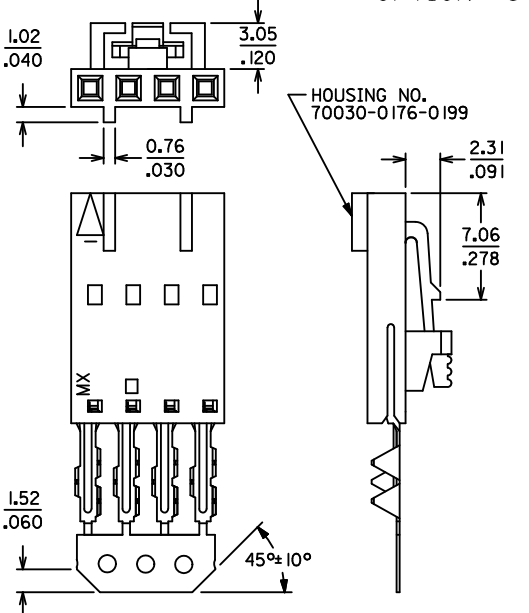
OPTION -D-



OPTIONAL CORE-OUT FOR HOUSING OPTIONS A & D
CKT. SIZES 2-25
(FOR CONTROL OF BOW)

CKT. SIZE	DIM. "A" (MAX.)	DIM. "B" (MAX.)
2	(2.54) .100	(5.05) .199
3	(5.08) .200	(7.59) .399
4	(7.62) .300	(10.13) .599
5	(10.16) .400	(12.67) .899
6	(12.70) .500	(15.21) .1.399
7	(15.24) .600	(17.75) .1.899
8	(17.78) .700	(20.29) .2.399
9	(20.32) .800	(22.83) .2.899
10	(22.86) .900	(25.37) .3.399
11	(25.40) 1.000	(27.91) .3.899
12	(27.94) 1.100	(30.45) .4.399
13	(30.48) 1.200	(32.99) .4.899
14	(33.02) 1.300	(35.53) .5.399
15	(35.56) 1.400	(38.07) .5.899
16	(38.10) 1.500	(40.61) .6.399
17	(40.64) 1.600	(43.15) .6.899
18	(43.18) 1.700	(45.69) .7.399
19	(45.72) 1.800	(48.23) .7.899
20	(48.26) 1.900	(50.77) .8.399
21	(50.80) 2.000	(53.31) .8.899
22	(53.34) 2.100	(55.85) .9.399
23	(55.88) 2.200	(58.39) .9.899
24	(58.42) 2.300	(60.93) 1.0.399
25	(60.96) 2.400	(63.47) 1.0.899

OPTION -G-



- NOTES:
 1. HOUSING: POLYESTER (PBT), UL94 V-0
 COLOR: BLACK
 TERMINAL: PHOSPHOR-BRONZE
 2. FINISHES:
 SEE PAGE 2 FOR PLATING FINISHES
 3. PRODUCT SPECIFICATION: PS-70430
 4. PACKAGING SPECIFICATION: PK-70873-0001
 5. SEE CHART FOR CIRCUIT SIZES
 6. TERMINALS ARE SHOWN PRE-LOADED INTO HOUSING AND LOCKED INTO FIRST ROW OF LOCKING TANG WINDOWS
 7. ALL DIMENSIONS ARE FOR REFERENCE ONLY
 8. SEE SHEET 2 FOR PART NUMBERS AND PLATINGS

MODIFY PRODUCT SPEC EC NO: UCP2010-0987 DRWNGS: BARRA 2009/12/28 CHKD: DMORGAN 2010/01/08 APPR: MILLER 2010/01/11	QUALITY SYMBOLS	GENERAL TOLERANCES (UNLESS SPECIFIED)	DIMENSION STYLE	SCALE	DESIGN UNITS	THIRD ANGLE PROJECTION
	▽=0	mm INCH	MM/IN	4:1	INCH	
	▽=0	4 PLACES ± --- ± ---	DRAWN BY DATE			
	▽=0	3 PLACES ± --- ± ---	MGB 12/21/88			
		2 PLACES ± --- ± ---	CHECKED BY DATE			
		1 PLACE ± --- ± ---	MGB 12/21/88			
		ANGULAR ±1/2°	APPROVED BY DATE			
			WAZ 12/21/88			
		DRAFT WHERE APPLICABLE MUST REMAIN WITHIN DIMENSIONS	MATERIAL NO.	DOCUMENT NO.		
			SEE TABLE			
			SIZE C	THIS DRAWING CONTAINS INFORMATION THAT IS PROPRIETARY TO MOLEX INCORPORATED AND SHOULD NOT BE USED WITHOUT WRITTEN PERMISSION		

ASSY, SL CONNECTOR, FFC MALE, SINGLE ROW 2.54/.100 GRID
 MOLEX INCORPORATED
 SDA-70431-****
 SHEET NO. 1 OF 2

CKT. SIZE	TIN PLATE OPTION -A-		TIN PLATE OPTION -D-		15 GOLD PLATE OPTION -A-		15 GOLD PLATE OPTION -D-		30 GOLD PLATE OPTION -A-		30 GOLD PLATE OPTION -D-		TIN PLATE OPTION -G-	
	EDP. NO.	ENG. NO.	EDP. NO.	ENG. NO.	EDP. NO.	ENG. NO.	EDP. NO.	ENG. NO.	EDP. NO.	ENG. NO.	EDP. NO.	ENG. NO.	EDP. NO.	ENG. NO.
2	15-38-9020	A-70431-0001	15-38-9022	A-70431-0071	15-47-4028	A-70431-0176	15-47-5020	A-70431-0246	15-47-5022	A-70431-0351	15-47-5024	A-70431-0421		
3	-9030	-0002	-9032	-0072	-4038	-0177	-5030	-0247	-5032	-0352	-5034	-0422		
4	-9040	-0003	-9042	-0073	-4048	-0178	-5040	-0248	-5042	-0353	-5044	-0423		
5	-9050	-0004	-9052	-0074	-4058	-0179	-5050	-0249	-5052	-0354	-5054	-0424		
6	-9060	-0005	-9062	-0075	-4068	-0180	-5060	-0250	-5062	-0355	-5064	-0425		
7	-9070	-0006	-9072	-0076	-4078	-0181	-5070	-0251	-5072	-0356	-5074	-0426		
8	-9080	-0007	-9082	-0077	-4088	-0182	-5080	-0252	-5082	-0357	-5084	-0427		
9	-9090	-0008	-9092	-0078	-4098	-0183	-5090	-0253	-5092	-0358	-5094	-0428		
10	-9100	-0009	-9102	-0079	-4108	-0184	-5100	-0254	-5102	-0359	-5104	-0429	15-38-9103	A-70431-0149
11	-9110	-0010	-9112	-0080	-4118	-0185	-5110	-0255	-5112	-0360	-5114	-0430		
12	-9120	-0011	-9122	-0081	-4128	-0186	-5120	-0256	-5122	-0361	-5124	-0431		
13	-9130	-0012	-9132	-0082	-4138	-0187	-5130	-0257	-5132	-0362	-5134	-0432		
14	-9140	-0013	-9142	-0083	-4148	-0188	-5140	-0258	-5142	-0363	-5144	-0433		
15	-9150	-0014	-9152	-0084	-4158	-0189	-5150	-0259	-5152	-0364	-5154	-0434		
16	-9160	-0015	-9162	-0085	-4168	-0190	-5160	-0260	-5162	-0365	-5164	-0435		
17	-9170	-0016	-9172	-0086	-4178	-0191	-5170	-0261	-5172	-0366	-5174	-0436		
18	-9180	-0017	-9182	-0087	-4188	-0192	-5180	-0262	-5182	-0367	-5184	-0437		
19	-9190	-0018	-9192	-0088	-4198	-0193	-5190	-0263	-5192	-0368	-5194	-0438		
20	-9200	-0019	-9202	-0089	-4208	-0194	-5200	-0264	-5202	-0369	-5204	-0439		
21	-9210	-0020	-9212	-0090	-4218	-0195	-5210	-0265	-5212	-0370	-5214	-0440		
22	-9220	-0021	-9222	-0091	-4228	-0196	-5220	-0266	-5222	-0371	-5224	-0441		
23	-9230	-0022	-9232	-0092	-4238	-0197	-5230	-0267	-5232	-0372	-5234	-0442		
24	-9240	-0023	-9242	-0093	-4248	-0198	-5240	-0268	-5242	-0373	-5244	-0443		
25	15-38-9250	A-70431-0024	15-38-9252	A-70431-0094	15-47-4258	A-70431-0199	15-47-5250	A-70431-0269	15-47-5252	A-70431-0374	15-47-5254	A-70431-0444		

PLATING PER ES-88:	CARRIER STRIP COLOR CODE
TIN	NONE
15 GOLD	YELLOW
30 GOLD	RED

PLATING CHART PER ES-88-***

TIN: TIN OVERALL
THICKNESS: 3.81 MICROMETERS (150 MICROINCHES) MINIMUM ALL OVER A NICKEL UNDERPLATE.

15 GOLD: SELECTIVE GOLD (Au) WITH SELECTIVE TIN
THICKNESS: 0.38 MICROMETERS (15 MICROINCHES) MINIMUM GOLD (Au) IN SELECT AREA
1.90 MICROMETERS (75 MICROINCHES) MINIMUM TIN IN SELECT AREA ALL OVER A NICKEL UNDERPLATE.

30 GOLD: SELECTIVE GOLD (Au) WITH SELECTIVE TIN
THICKNESS: 0.76 MICROMETERS (30 MICROINCHES) MINIMUM GOLD (Au) IN SELECT AREA
1.90 MICROMETERS (75 MICROINCHES) MINIMUM TIN IN SELECT AREA ALL OVER A NICKEL UNDERPLATE.

SEE SHEET 1 EC NO: UCP2010-0987 DRAWN BY: DRWINMS BARRA 2009/12/28 CHKD BY: CHKD:DMORGAN 2010/01/08 APPR: MILLER 2010/01/11	QUALITY SYMBOLS ▽=0 ▽=0 ▽=0	GENERAL TOLERANCES (UNLESS SPECIFIED)		DIMENSION STYLE MM/IN		SCALE 1:1	DESIGN UNITS INCH	THIRD ANGLE PROJECTION	
		4 PLACES ± ---	± ---	DRAWN BY MGB	DATE 12/21/88	TITLE ASSY, SL CONNECTOR, FFC MALE, SINGLE ROW 2.54/.100 GRID			
		3 PLACES ± ---	± ---	CHECKED BY MGB	DATE 12/21/88				
		2 PLACES ± ---	± ---	APPROVED BY WAZ		DATE 12/21/88	MATERIAL NO. DOCUMENT NO. SDA-70431-****		
1 PLACE ± ---	± ---	ANGULAR ±1/2°							
DRAFT WHERE APPLICABLE MUST REMAIN WITHIN DIMENSIONS		SEE TABLE		SHEET NO. 2 OF 2		THIS DRAWING CONTAINS INFORMATION THAT IS PROPRIETARY TO MOLEX INCORPORATED AND SHOULD NOT BE USED WITHOUT WRITTEN PERMISSION			